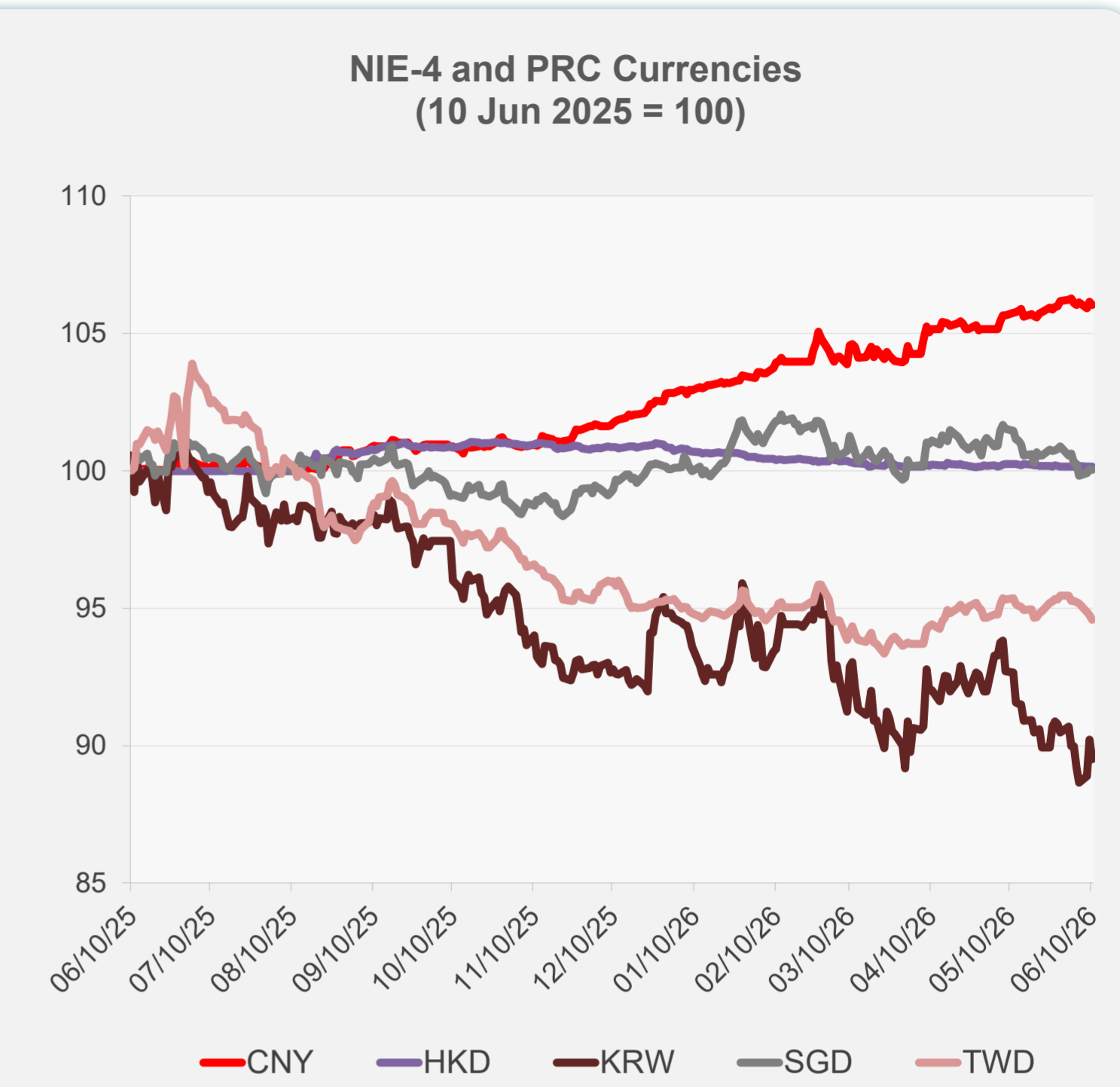
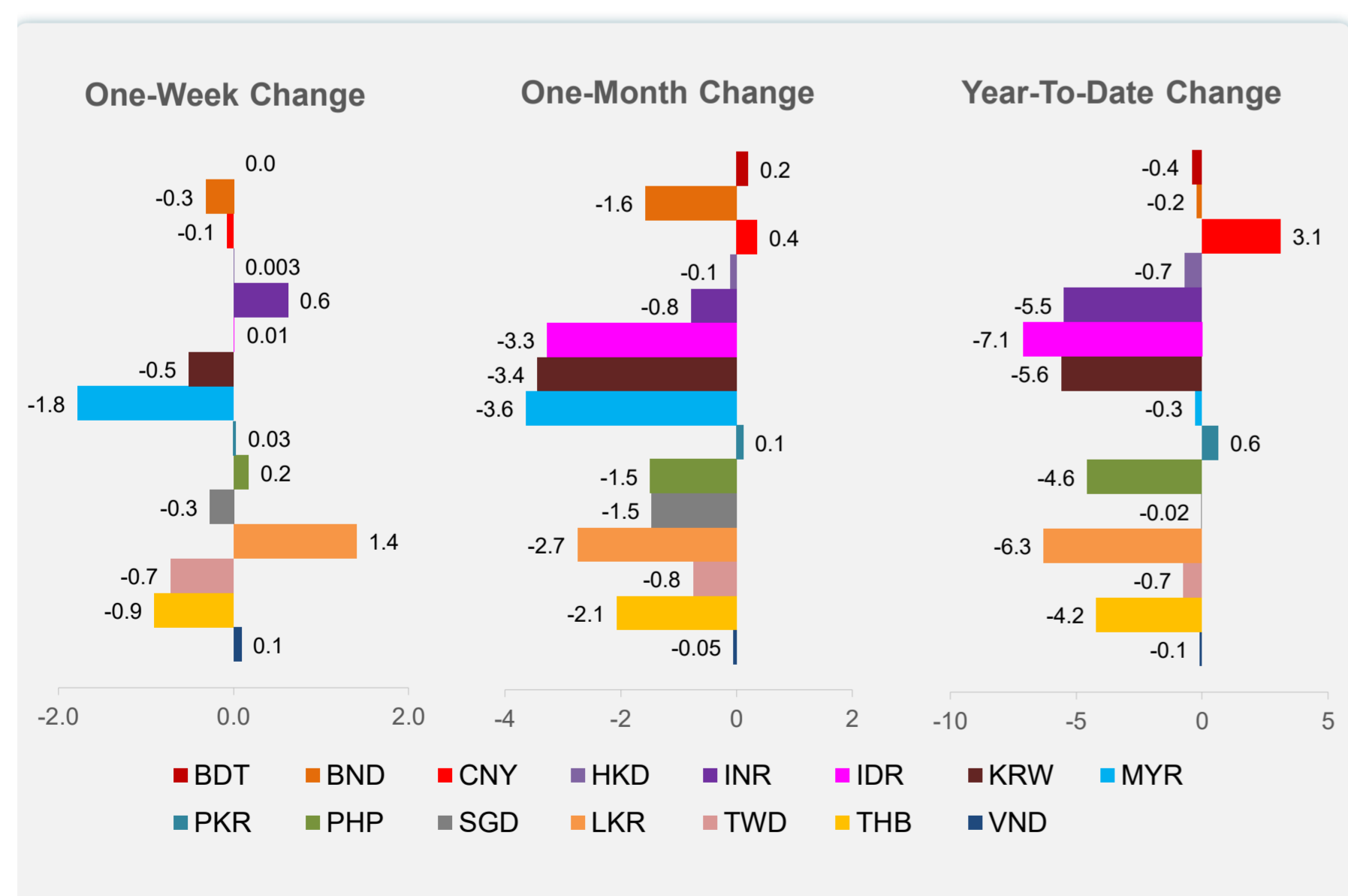
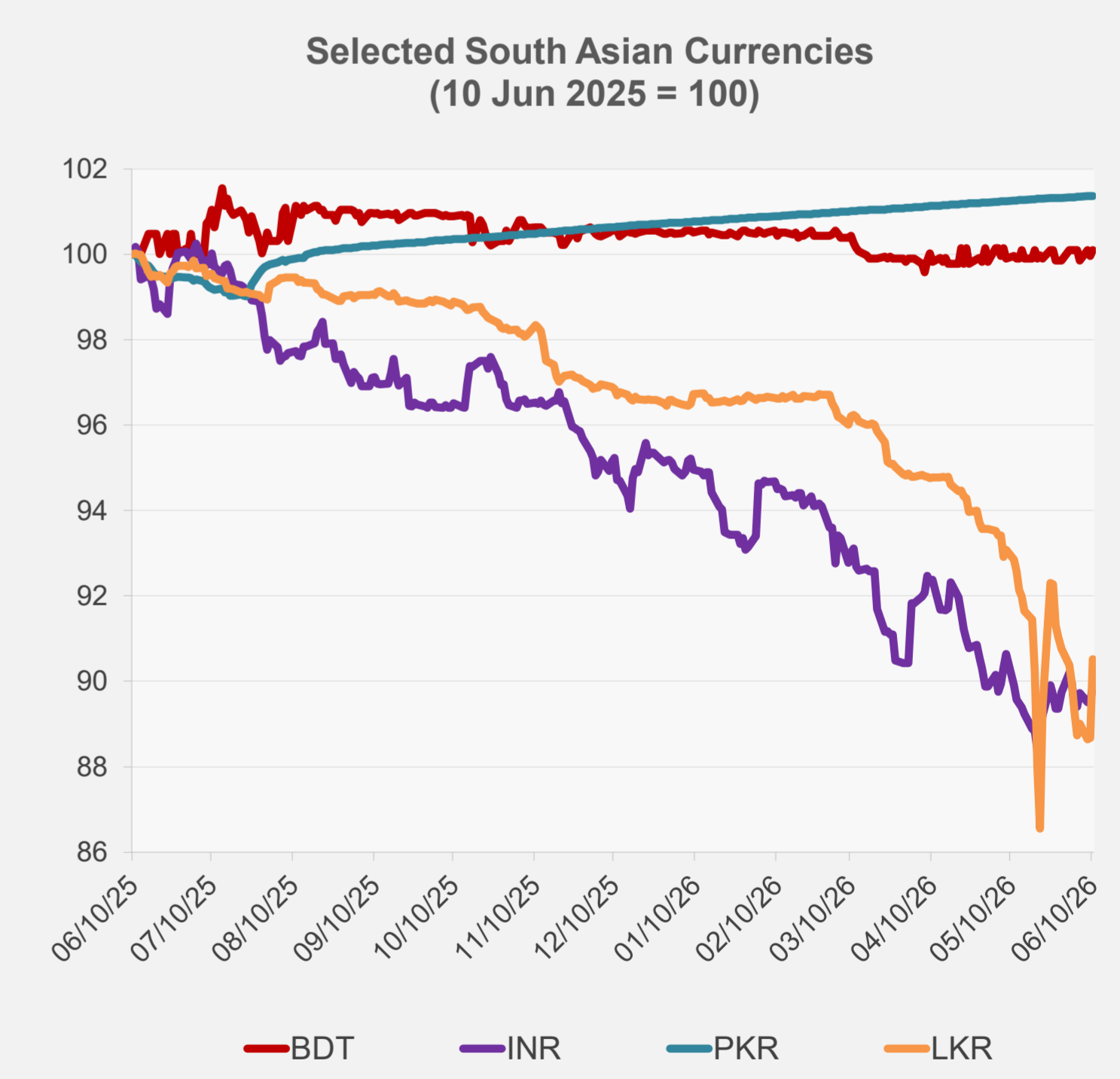
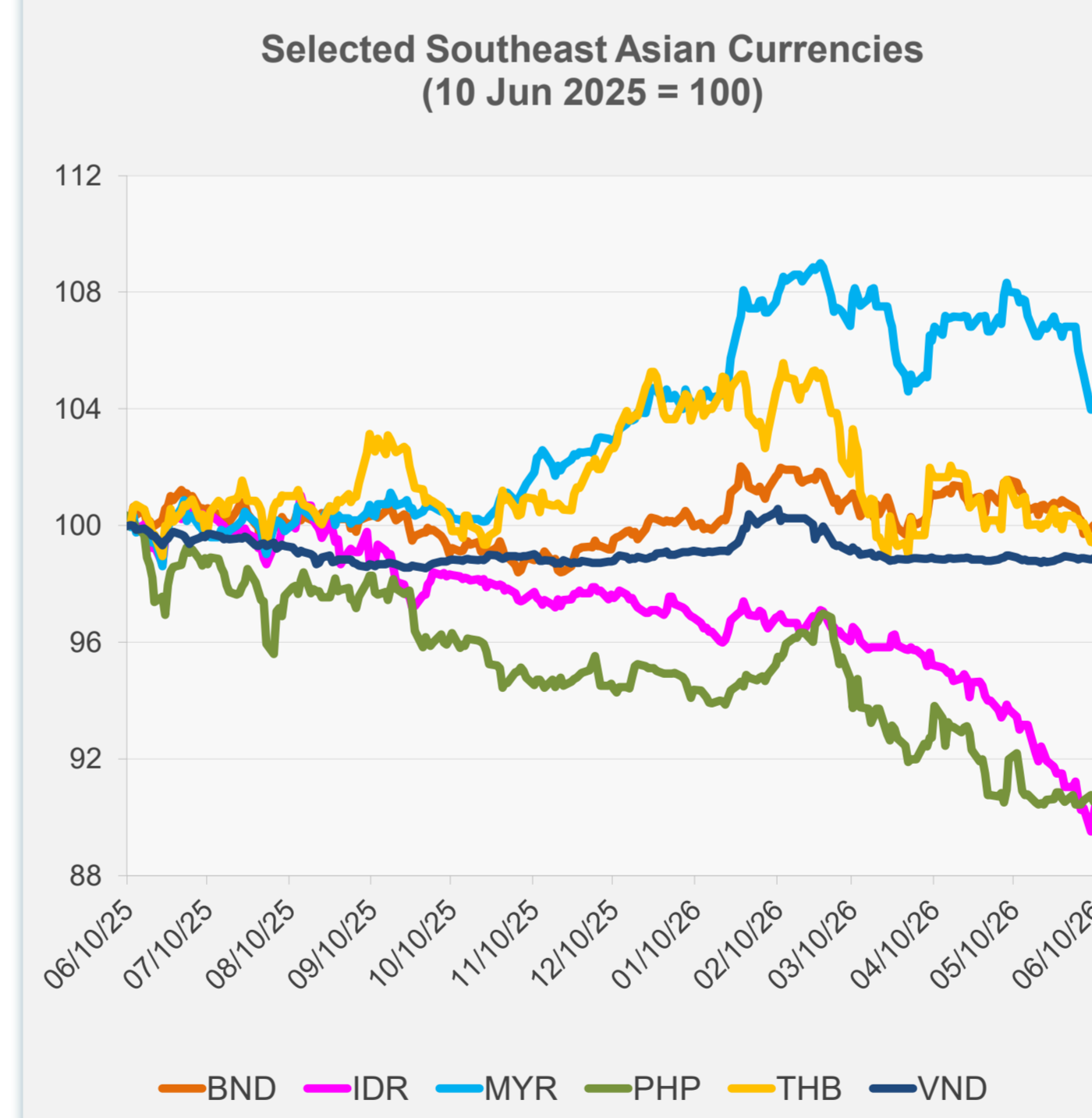


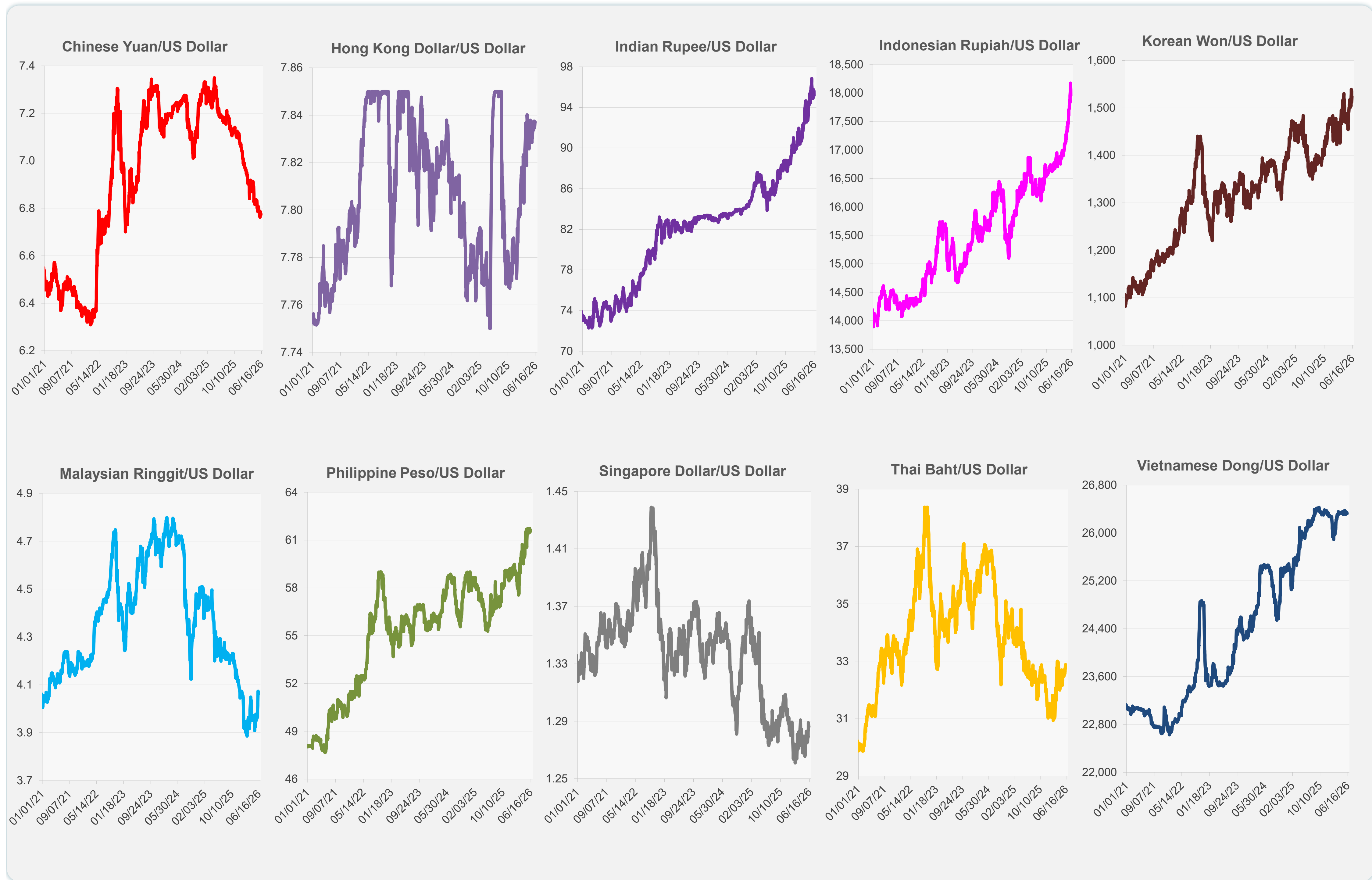
	Latest Closing	% change from Previous Day	% change from 01-Jan-26
Euro	0.87	-0.08	-1.63
Japanese yen (JPY)	160.39	-0.12	-2.75
Bangladeshi taka (BDT)	122.75	0.14	-0.41
Brunei dollar (BND)	1.29	-0.05	-0.19
Chinese yuan (CNY)	6.78	-0.11	3.11
Hong Kong dollar (HKD)	7.84	0.00	-0.68
Indian rupee (INR)	95.19	0.47	-5.47
Indonesian rupiah (IDR)	17,952.50	0.57	-7.12
Korean won (KRW)	1,524.20	-0.79	-5.59
Malaysian ringgit (MYR)	4.07	-0.20	-0.27
Pakistan rupee (PKR)	278.35	0.00	0.63
Philippine peso (PHP)	61.61	0.09	-4.55
Singapore dollar (SGD)	1.29	-0.03	-0.02
Sri Lanka rupee (LKR)	330.35	2.09	-6.28
Taipei,China NT dollar (TWD)	31.67	-0.16	-0.73
Thai baht (THB)	32.88	-0.11	-4.19
Vietnamese dong (VND)	26,321.00	0.04	-0.08



NIE = Newly Industrialized Economies



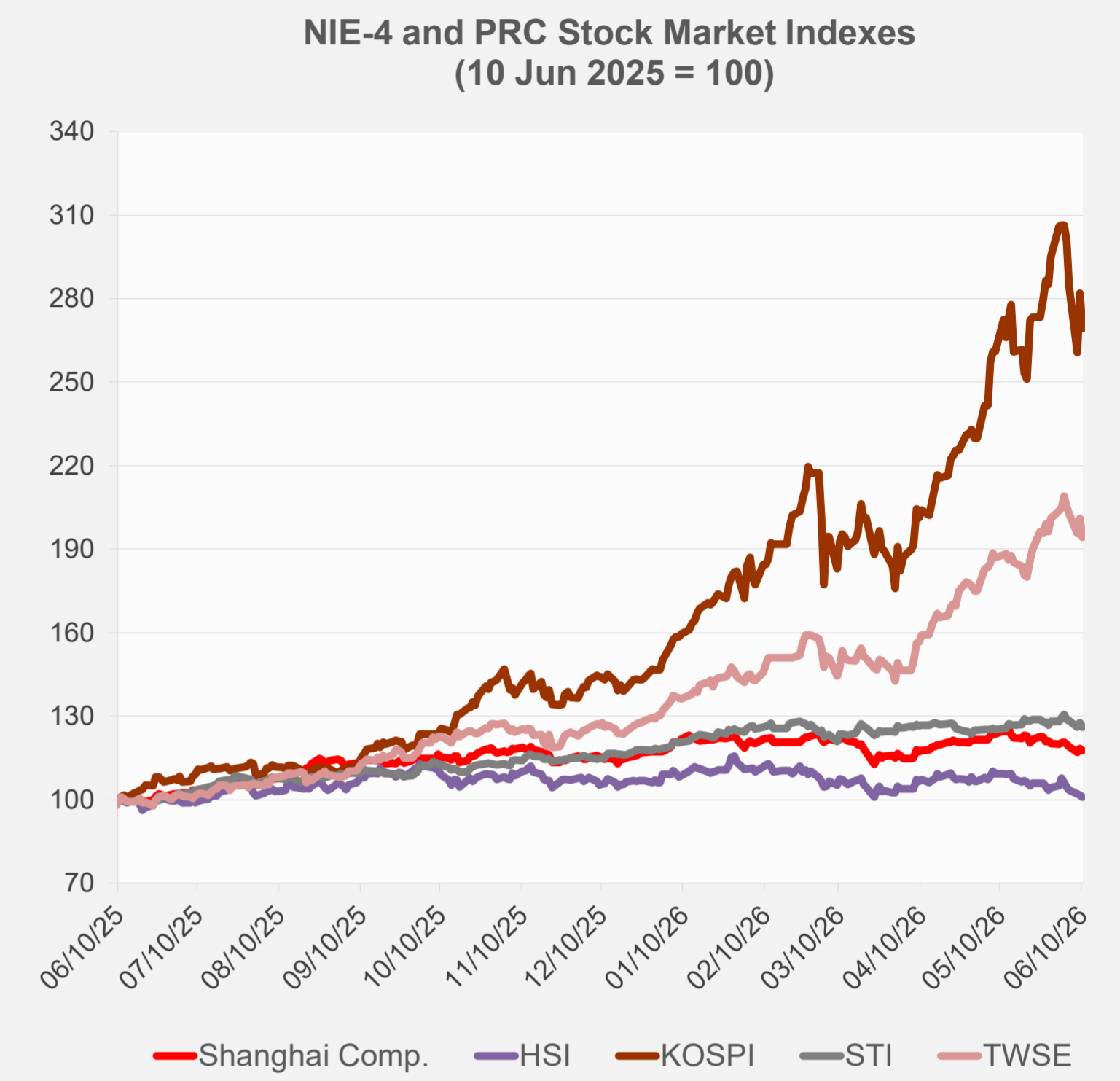
Note: Negative/Decreasing values indicate depreciation of local currency, and positive/increasing values indicate appreciation.  
Source: ADB calculations using data from Bloomberg and Haver Analytics.



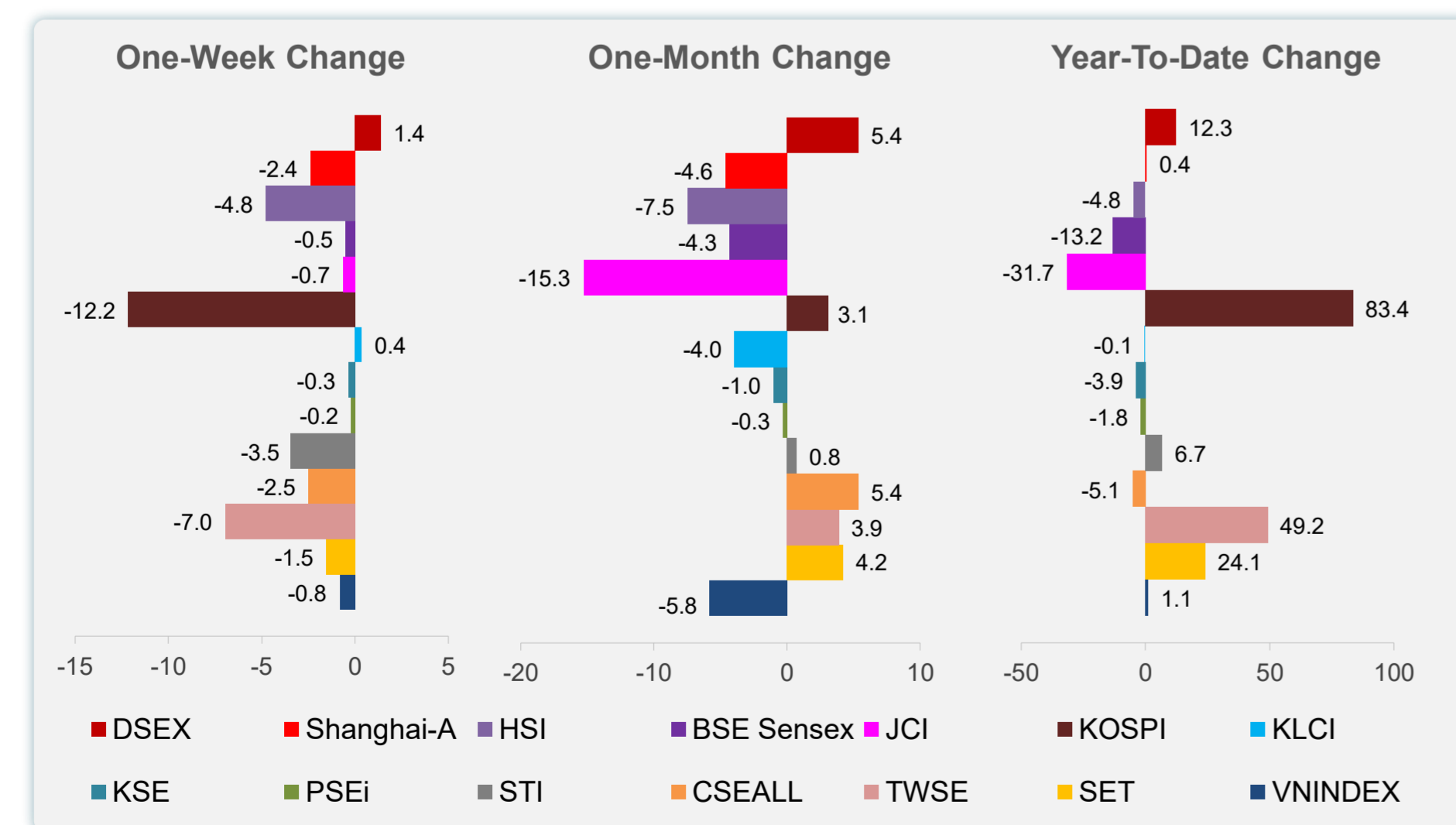
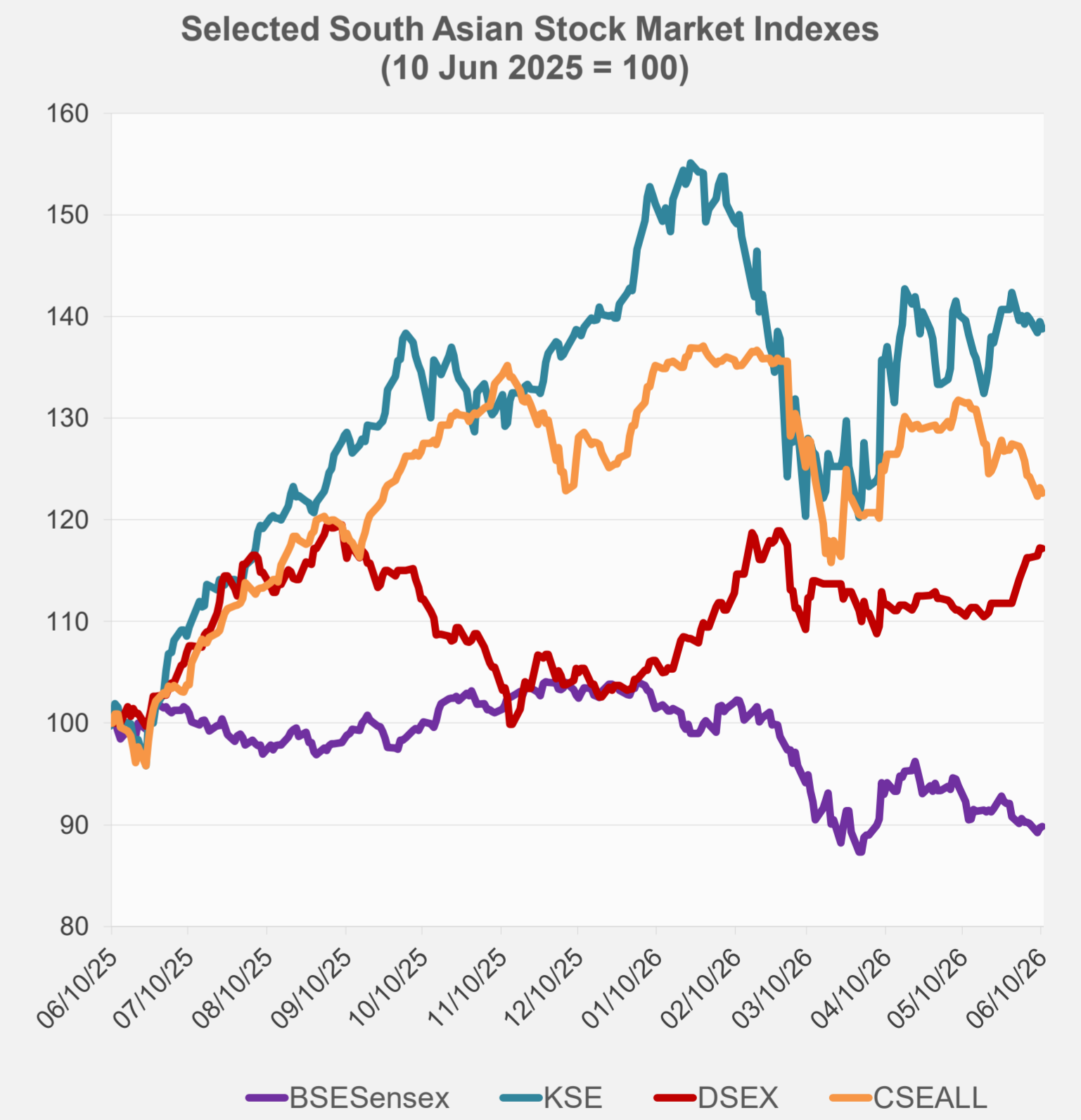
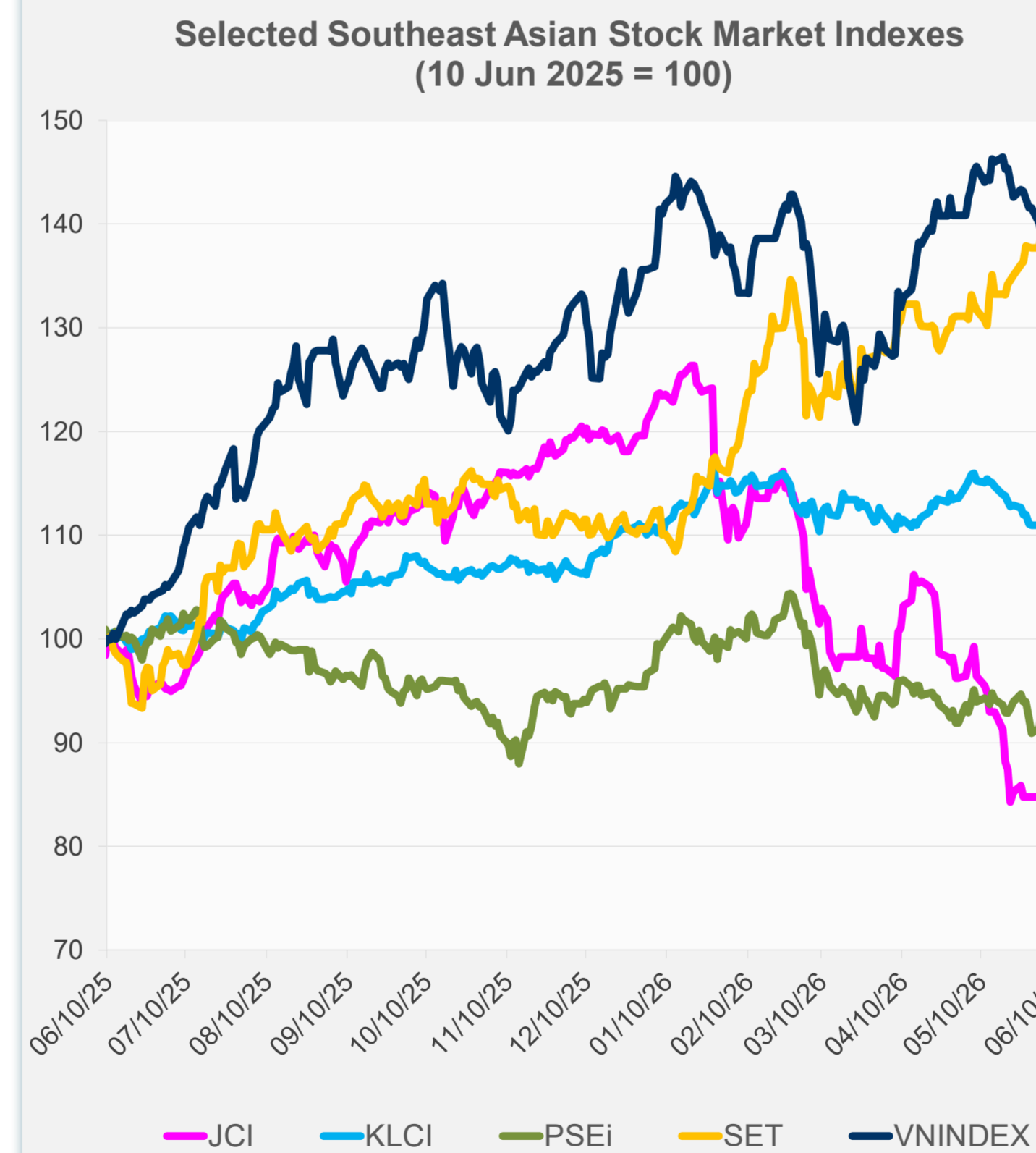
Source: Haver Analytics.

Daily Market Watch  
**STOCK INDEXES**

	Latest Closing	% change from Previous Day	% change from 01-Jan-26
US Dow Jones Ind Avg	49,918.78	-1.87	3.86
US NASDAQ	25,169.50	-1.98	8.29
US S&P 500	7,266.99	-1.62	6.16
UK FTSE 100	13,744.64	0.02	22.05
EURO STOXX 50	6,009.95	-0.66	3.77
Japan NIKKEI 225	64,179.27	-1.89	27.49
Bangladesh DSEX	5,516.82	-0.05	12.34
PRC Shanghai Comp.	3,986.58	-0.58	0.45
Hong Kong, China HSI	24,407.96	-0.64	-4.77
India BSE Sensex	73,983.18	0.09	-13.15
Indonesia JCI	5,902.38	2.71	-31.74
Korea, Rep. of KOSPI	7,730.82	-4.52	83.45
Malaysia KLCI	1,678.96	0.21	-0.07
Pakistan KSE 100	169,588.00	-0.51	-3.90
Philippines PSEi	5,941.36	-0.07	-1.84
Singapore STI	4,958.85	-1.28	6.73
Sri Lanka CSEALL	21,461.47	-0.40	-5.14
Taipei, China TWSE	43,225.54	-3.31	49.24
Thailand SET	1,563.59	-1.30	24.13
Viet Nam VNINDEX	1,803.71	0.59	1.08



NIE = Newly Industrialized Economies



Sources: ADB calculations using data from Bloomberg and CEIC Data Company.

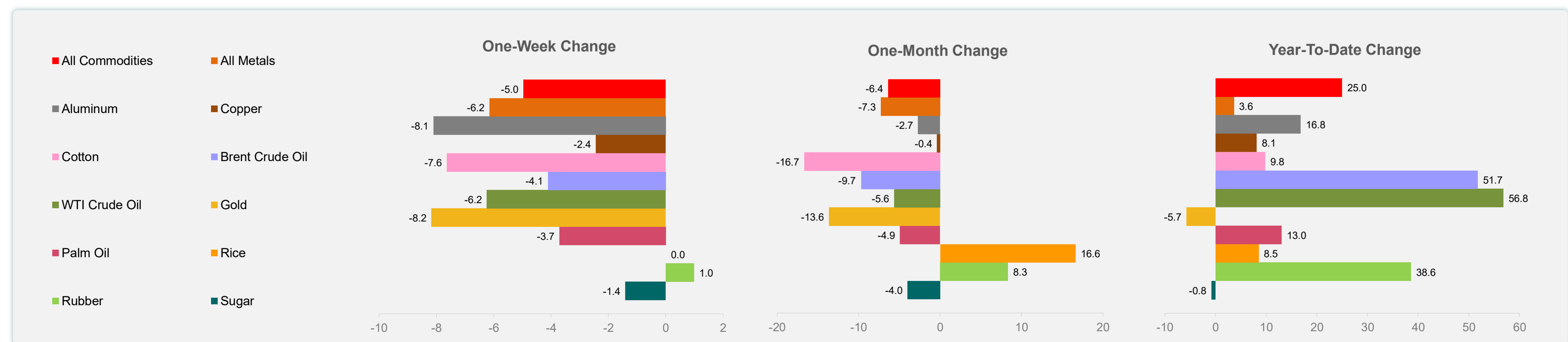
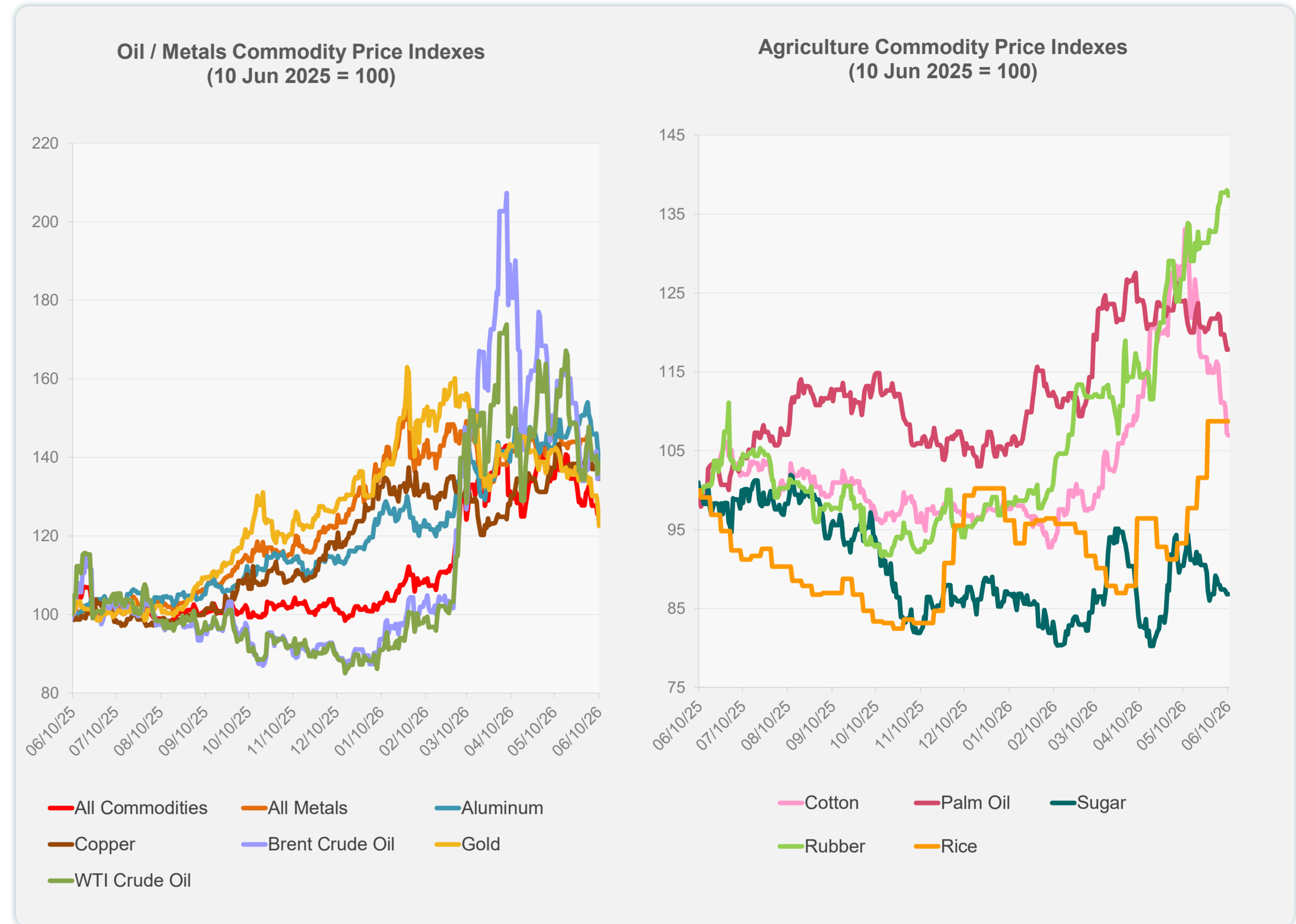


Sources: ADB calculations using data from Bloomberg and CEIC Data Company.

Daily Market Watch  
**COMMODITY PRICES**

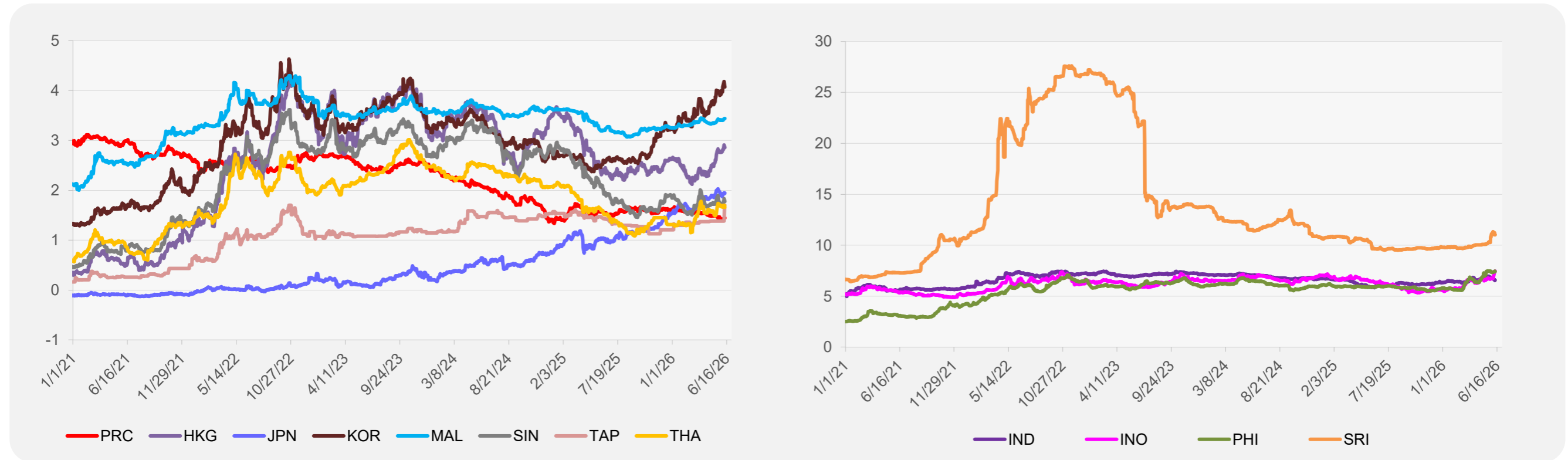
	Unit	Latest Closing	% change from Previous Day	% change from 01-Jan-26
S&P All Commodities	US\$	685.39	0.48	24.95
S&P All Metals	US\$	459.90	-2.14	3.64
Aluminum	US\$/metric ton	3,466.13	-2.71	16.78
Copper	US\$/metric ton	13,466.23	-0.79	8.13
Cotton	US cents/lb	68.10	-0.23	9.80
Brent Crude Oil	US\$/barrel	94.76	1.12	51.75
WTI Crude Oil	US\$/barrel	90.03	2.07	56.79
Gold	US\$/troy oz	4,072.31	-4.42	-5.72
Palm Oil	US\$/metric tonne	1,094.72	0.03	13.02
Rice <sup>1</sup>	US\$/metric ton	484.00	0.00	8.52
Rubber <sup>2</sup>	US\$/kg	297.90	-0.50	38.56
Sugar	US cents/lb	14.67	0.00	-0.81

<sup>1</sup> Latest closing price from 27 May 2026.  
<sup>2</sup> Singapore Exchange, Ribbed Smoked Sheet Rubber.

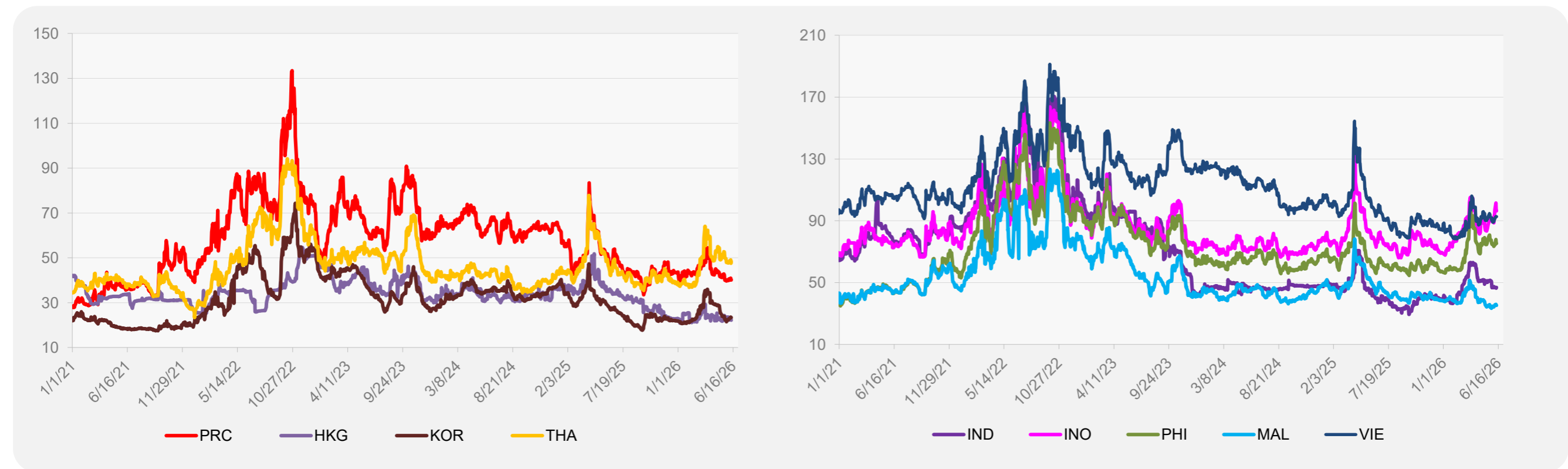


Source: ADB calculations using data from Bloomberg.

### 5-YEAR LOCAL CURRENCY GOVERNMENT BOND YIELDS (%)



### 5-YEAR CREDIT DEFAULT SWAP<sup>1</sup>



<sup>1</sup> In USD and based on sovereign bonds.  
Source: ADB calculations using data from Bloomberg.